



# FUTURE OF OUR BLOCK

**Year One: Learning Together**



# View of Midtown with recent and future developments



Green = delivered since January 2018  
Purple = presently under construction  
Blue = cleared the development review process



# Satellite image of Midtown





# Aerial view of the development sites around us



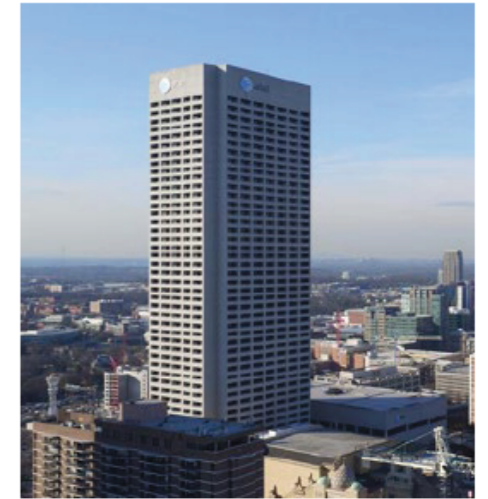
A. ANTHEM TECH CENTER



B. 712 WEST PEACHTREE



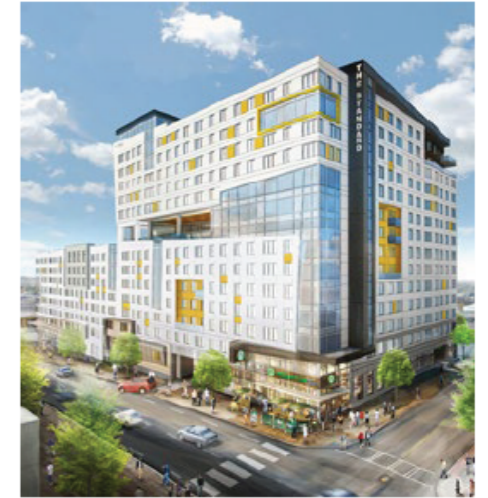
C. CODA



D. AT&T MIDTOWN CENTER



E. 3RD & SPRING



F. THE STANDARD



# Aerial view of the development site for the Norfolk Southern Headquarters



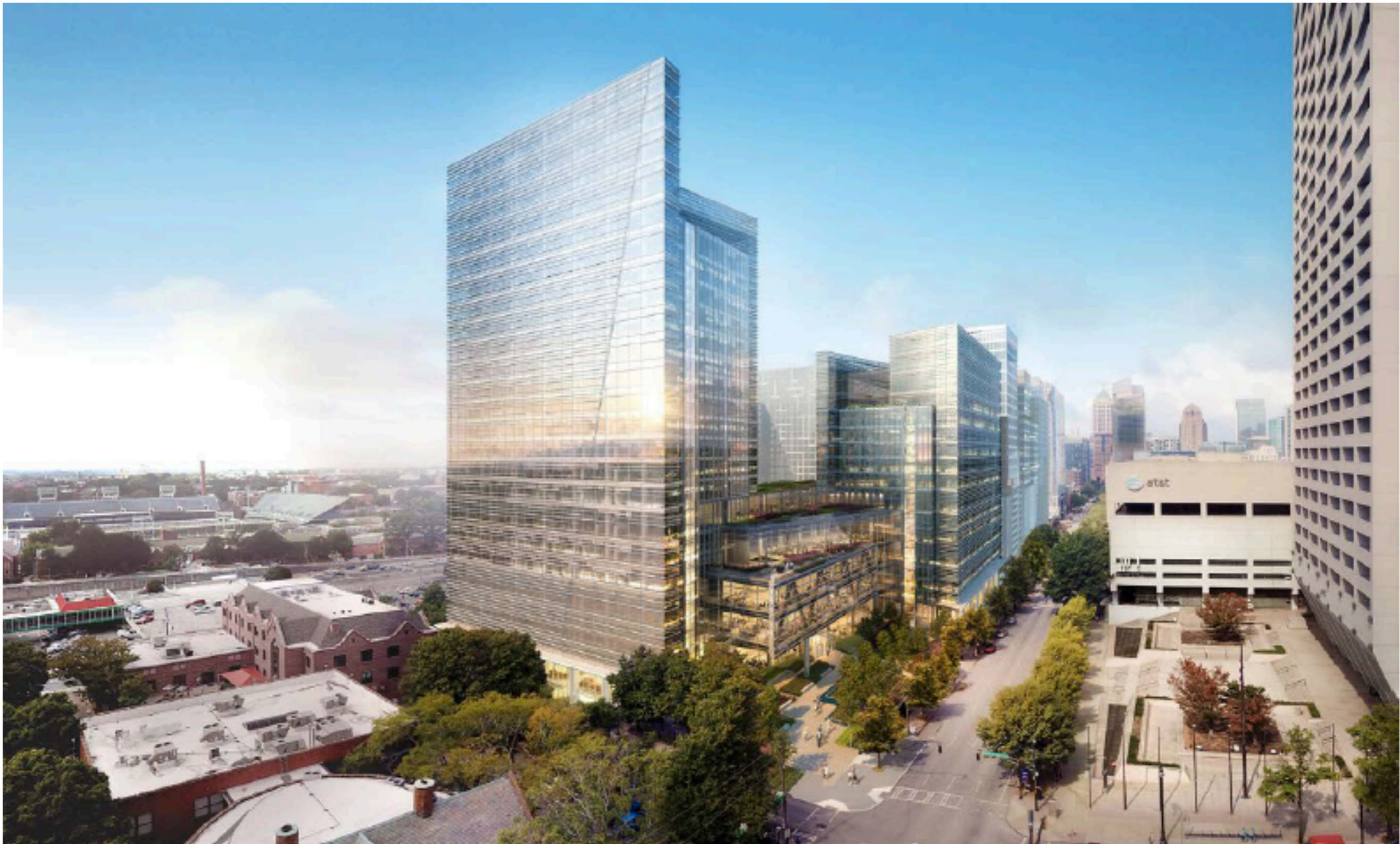


# View of Midtown with the future Norfolk Southern Headquarters





# Future Norfolk Southern Headquarters (West Peachtree St and Ponce de Leon Ave)





**Future Norfolk Southern Headquarters (front of building faces West Peachtree)**





# Future Norfolk Southern Headquarters (West Peachtree St)





# Future Children's Center at Norfolk Southern (Ponce de Leon Ave and Spring St)





# Future intersection of West Peachtree St and Ponce de Leon Ave





# Future intersection of West Peachtree St and Ponce de Leon Ave





# Entrance to future Norfolk Southern Headquarters

650 West  
Peachtree





# Entrance to future Norfolk Southern Headquarters (looking South toward the church)





# Entrance plaza to future Norfolk Southern Headquarters

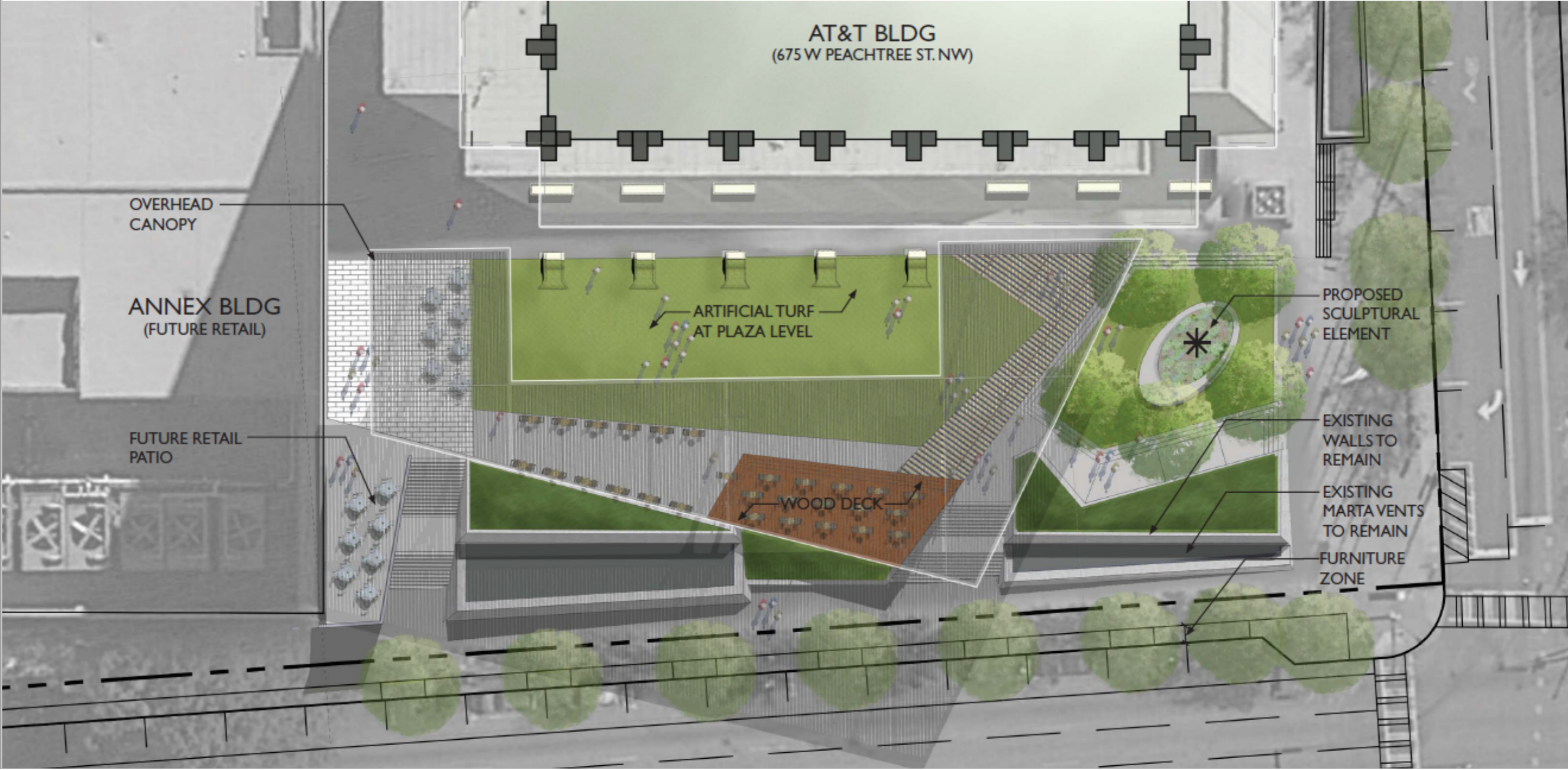




# Potential plans for a new entrance plaza to the AT&T building

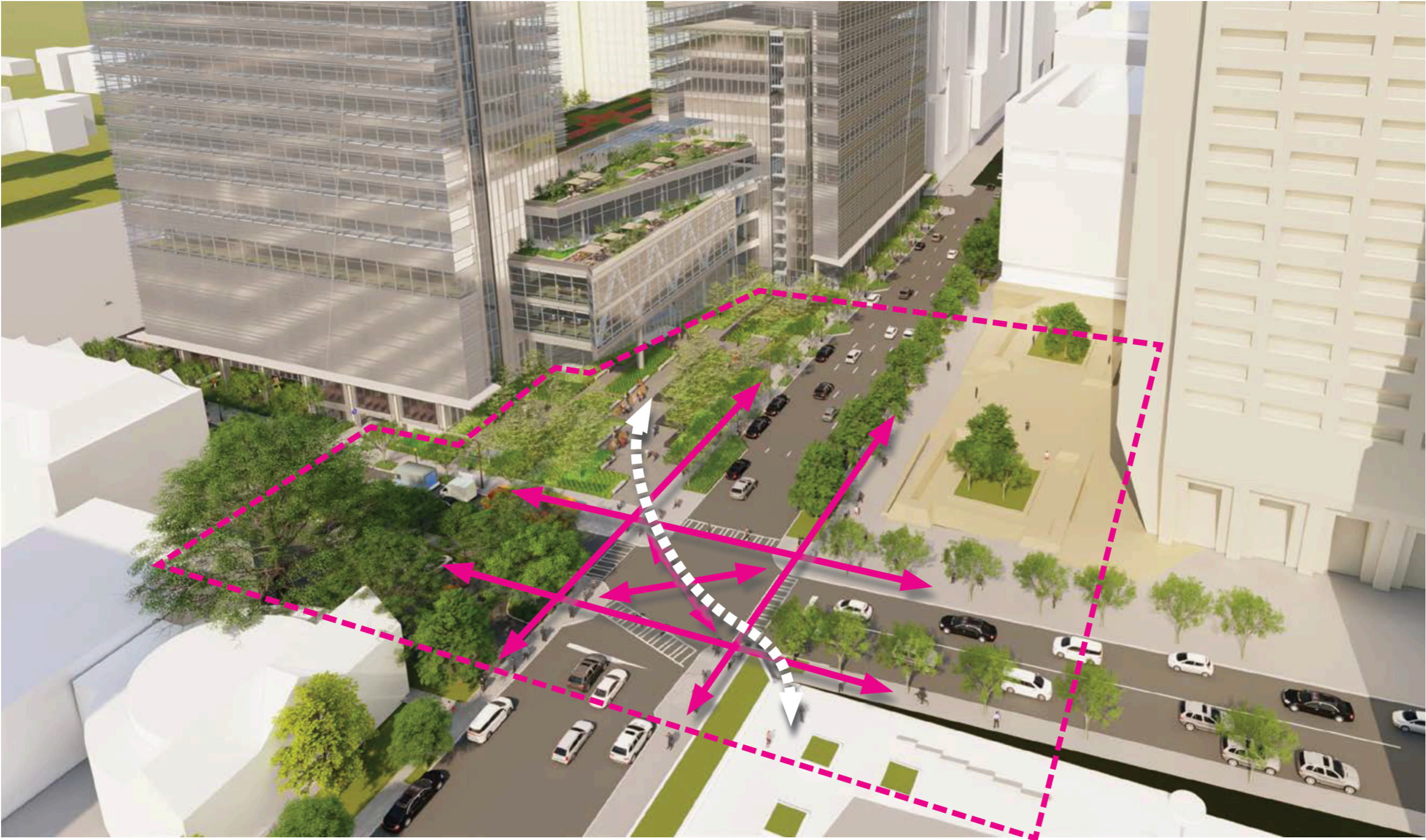
## 675 WEST PEACHTREE

### SITE PLAN





# Improved intersection at West Peachtree St and Ponce de Leon Ave





# Potential plans for improvement at the North Ave MARTA Station

## MIDTOWN ATLANTA TRANSIT STATION ENHANCEMENTS

### NORTH AVE STATION

Total Cost: \$2,961,724



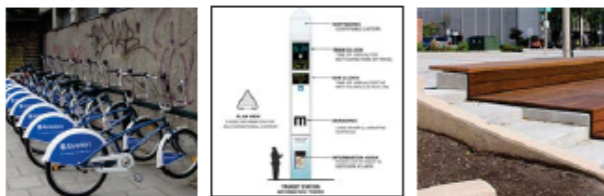
#### Ponce de Leon Ave Plaza and Shade Structure (Zone E)

- \$177,200 - Pedestrian Lights - illuminating columns, bollards, and accent lights
- \$825,000 - Shade Canopy - perforated metal panels with dichroic glass and integrated lighting
- \$42,000 - Plaza Seating - precast concrete in varying shapes and sizes
- \$103,787 - Greenspace - remove existing tree wells and add new mounding landscape areas
- \$30,724 - Stair Planter - metal planters partially on the plaza and partially transitioning down the stairs on Ponce de Leon Ave
- \$312,152 - Decorative Plaza Pavement - throughout Ponce de Leon Ave Plaza and replace handrails

\$1,490,863\*



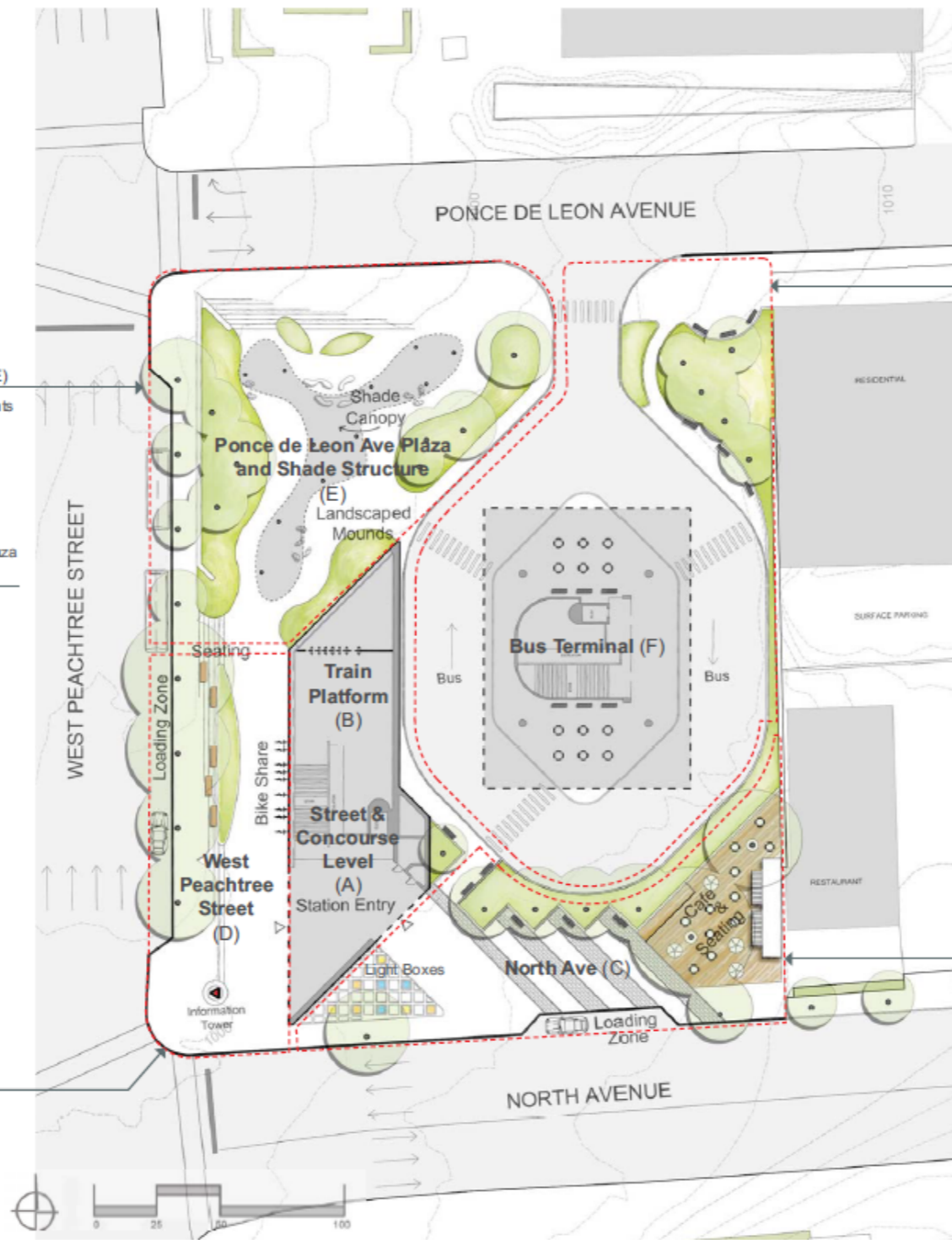
West Peachtree Street Rendering



#### West Peachtree Street (Zone D)

- \$68,000 - Pedestrian Lights - illuminating columns, bollards, and accent lights
- \$49,206 - Stadium Seating - on West Peachtree Street stairs, replace hand rails
- \$114,250 - Transit Tower - digital monitors display live transit schedule
- \$63,233 - Greenspace - remove existing tree wells and add new landscape area
- \$1,032 - Shuttle and Vehicle Loading Zone - along Peachtree Place
- \$6,500 - Bike Share - bike share, repair, and parking racks by vender

\$302,221\*



#### Bus Terminal (Zone F)

- \$38,000 - Lighting - uplighting on exterior bus canopy
- \$16,680 - Movable Seats and Tables - steel table with matching chairs
- \$12,000 - Informational Signage - digital monitors display live transit schedule
- \$31,700 - Greenspace - remove existing terminal walls and replace with mounding landscape

\$98,380\*



North Ave Rendering



#### North Ave (Zone C)

- \$122,400 - Pedestrian Lights - illuminating columns, bollards, and accent lights
- \$195,300 - Container Café - to anchor North Ave
- \$27,800 - Movable Seats and Tables - steel table with matching chairs
- \$27,467 - Demolish Bus Entry - convert to active urban pocket park
- \$190,684 - Granite Plaza Pavement - banding patterns with vertical panels to screen bus mall
- \$5,877 - Vehicle Loading Zone - along North Ave
- \$35,280 - Light Boxes - replace existing tree planters with interactive lighted boxes

\$604,808\*

ROSEVIEW CONSULTING ARCHITECTS ENHANCED INTERIOR • HENSE • SPILLER + YOUNGSON Architectural Lighting Design • SYLVANIA studio • SMITHDALIA ARCHITECTS, LLC

\* Zone Pricing by Winter Construction December 10, 2013 page 1/2



# Recently improved Midtown MARTA Station

